



SAVI Advanced – More Information

More Information

[About the Data](#)

[Troubleshooting](#)

More Information

About the Data

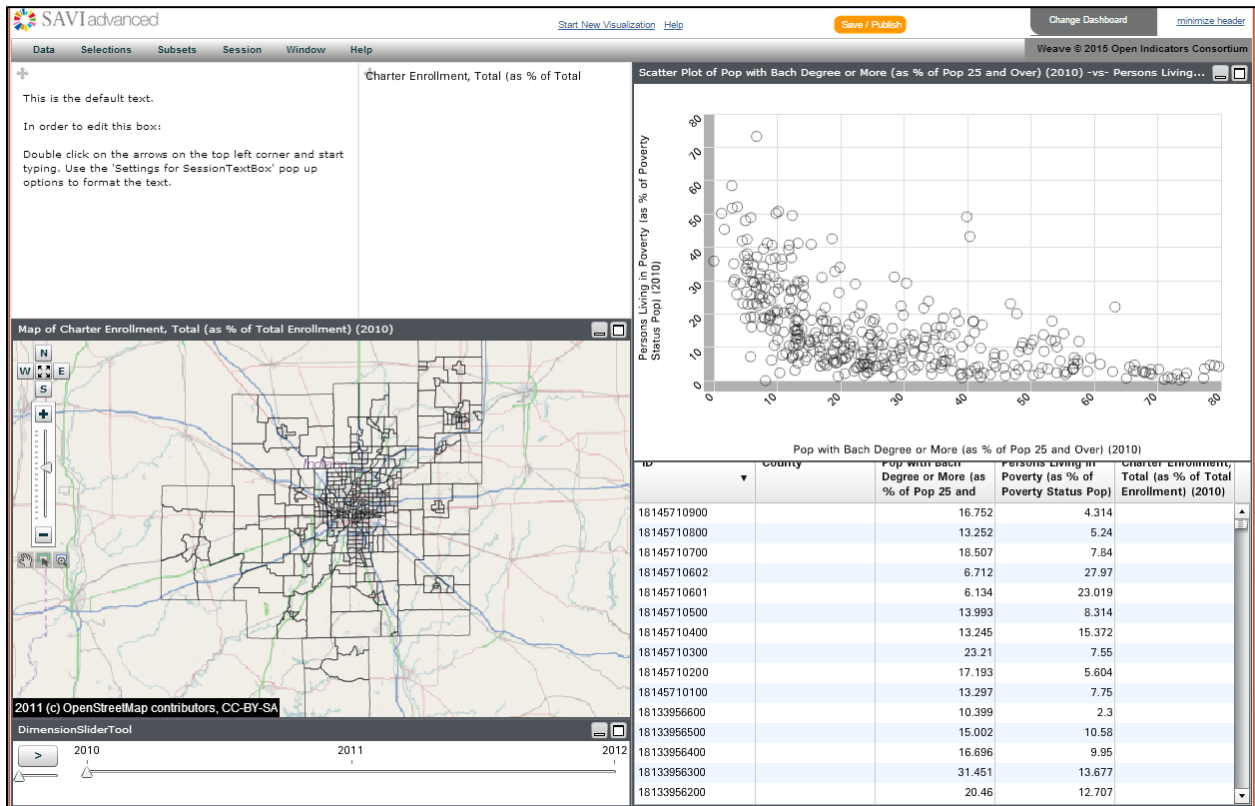
The data come from a variety of data sources. See <http://www.savi.org/data-descriptions/> for a complete listing of data sources.

If there are other data you would like to see in SAVI Advanced, please drop us a note at savi@iupui.edu.

Trouble Shooting

If you find other problems or quirks not mentioned below, please let us know (savi@iupui.edu) so we can put it in the queue to fix!

Problem: Uh-oh! The color is gone from my visualizations and my screen looks something like this:



Solution: This happens when you select a geography level that is not available for all the indicator displayed. Select another geography level or change the indicators you are viewing.

Problem: I get the following message when I try to save...



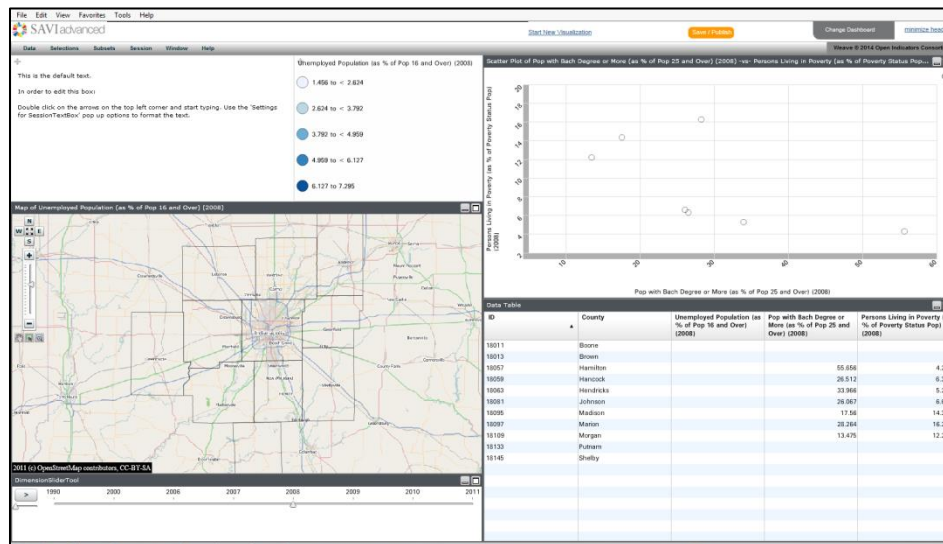
Solution: This message appears if you click **Save** multiple times before getting the “save successful” message. After you click **Save**, be sure to wait for the “save successful” message before closing the Save window. It might take several seconds.

This message also appears if you have saved your work as a session and then try to save it as an image. To save as a different format, you must start a new visualization.

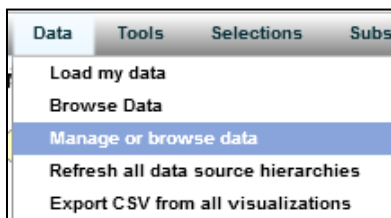
Problem: The map street layer does not display:

Explanation: This tool utilizes OpenStreetMap. If that service is not functioning, the map background will not draw. However, the color-coded data layers should still draw on the map.

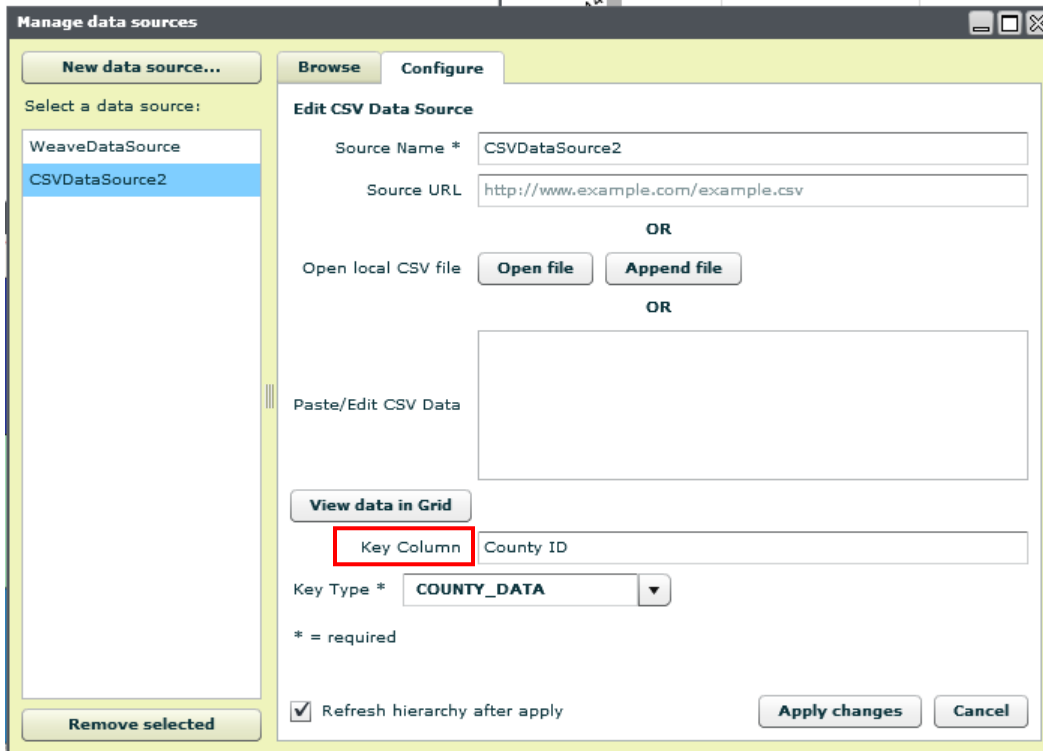
Problem: Some of my visualizations are not displaying data...



Solution: First, make sure that your data is configured correctly. Click on **Data** in the upper left hand corner of the **SAVI Advanced** screen and select **Manage or browse data:**



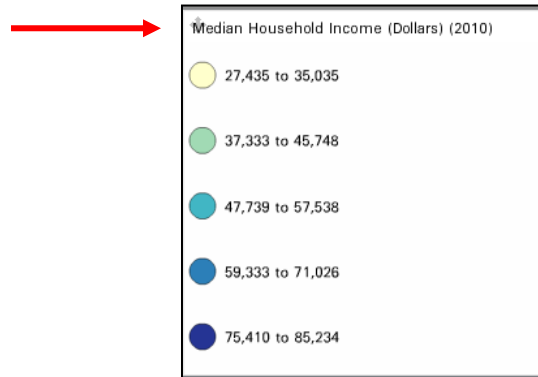
- The **Manage data sources** screen will open. Highlight your data source, and click on the **Configure** tab



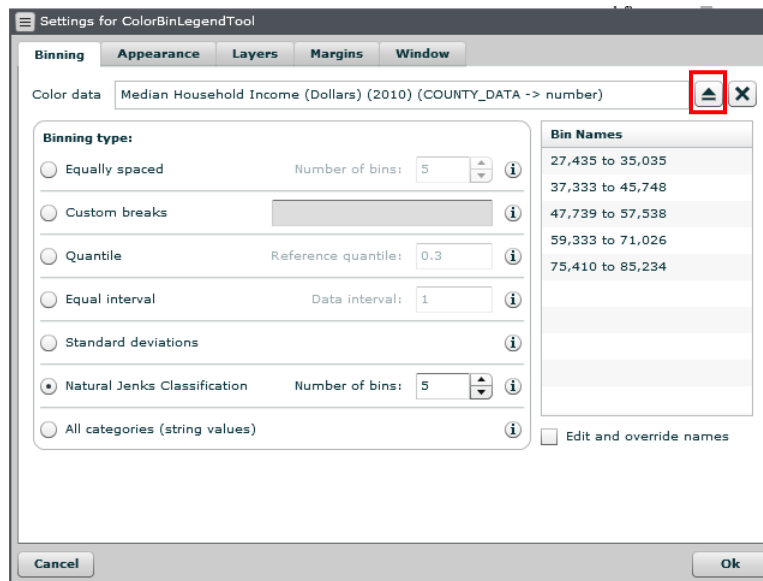
- Make sure that the **Key Column** is filled correctly with the name of the column in your uploaded file which contains the unique geographic identifier for your data (the County ID number in this case). If the **Key Column** is empty, type in the name of the column in your data set which contains the unique geographic identifier.

Problem: I used **Change Indicator** or **Add/Remove Tools** or changed the value displayed on the x- or y-axis in the **Scatterplot Tool**, and other components of my visualization have lost their connection to the data.

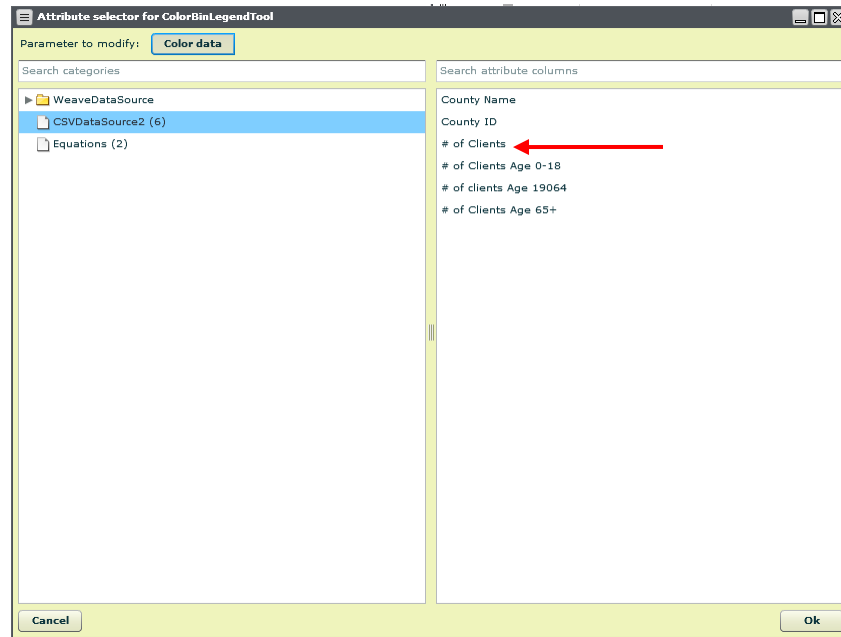
Solution: Finish making the changes you want, and then open the **Settings** for the tool which seems to have lost its data connection. For example, double-click on the upper left hand corner of the **ColorBinLegend Tool** to open its **Settings** window:



- In the **Settings** window, click on the up arrow to the left of the **Color data** display box:



- In the **Attribute selector** for **ColorBinLegendTool**, highlight your data source and click on the variable you would like the tool to display:



- Click **Ok**. Make any additional selections in the settings such as selecting the binning type under the **Binning** tab, altering the colors displayed under the **Appearance** tab, or adding a Visualization title under the **Margins** tab and click **Ok**.