



## Births to Mothers Age 15 to 18

The U.S. Center for Disease Control and Prevention released birth statistics in April 2010 that show a decrease in 2008 of teenage births in the United States after increasing in 2006 and 2007. The U.S. teen birth rate dropped almost two percent between 2007 and 2008. As seen in figure 1, the largest decrease is seen in older teenagers, age 18 to 19 years old.

Did teenage births in Marion County decrease? What school corporations are seeing an increase?

As seen in figure 2, the births to mothers age 15-18 per 1,000 population continues to decrease in Marion County and the Indianapolis Public School Corporation, following a 2006 increase. Marion County's and Indianapolis Public School's trends resemble the national trend.

Figure 1

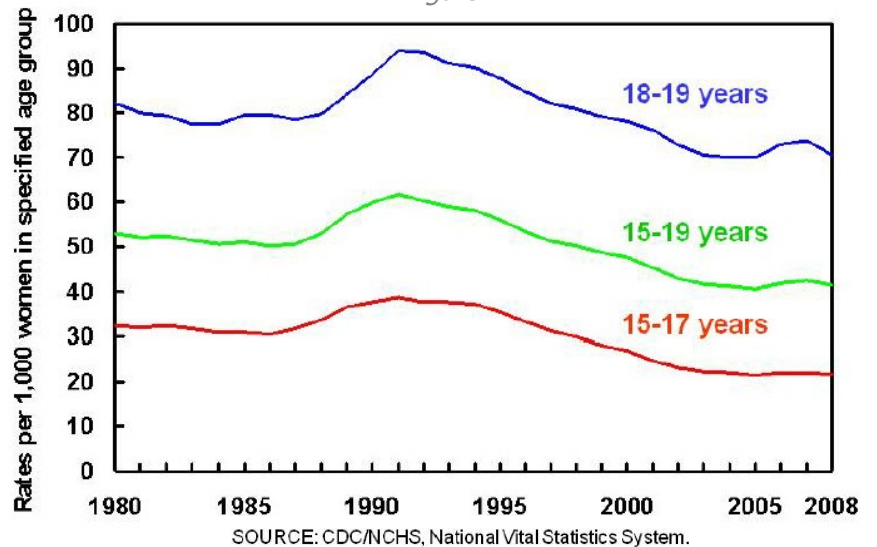
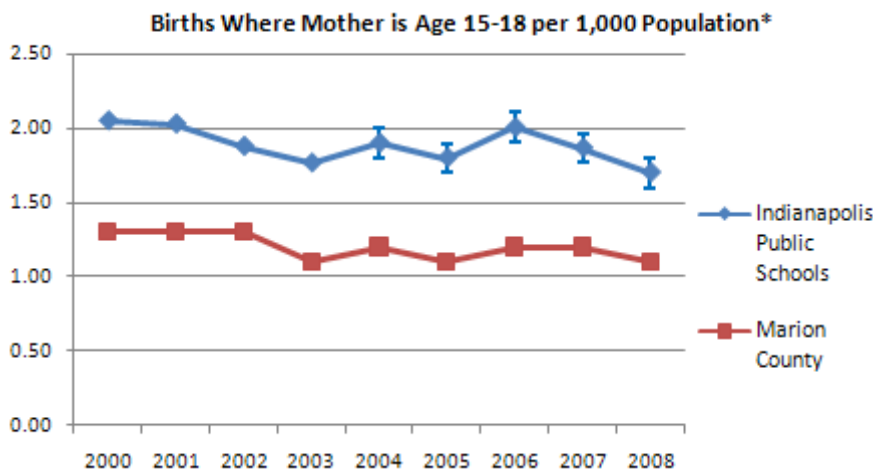


Figure 2



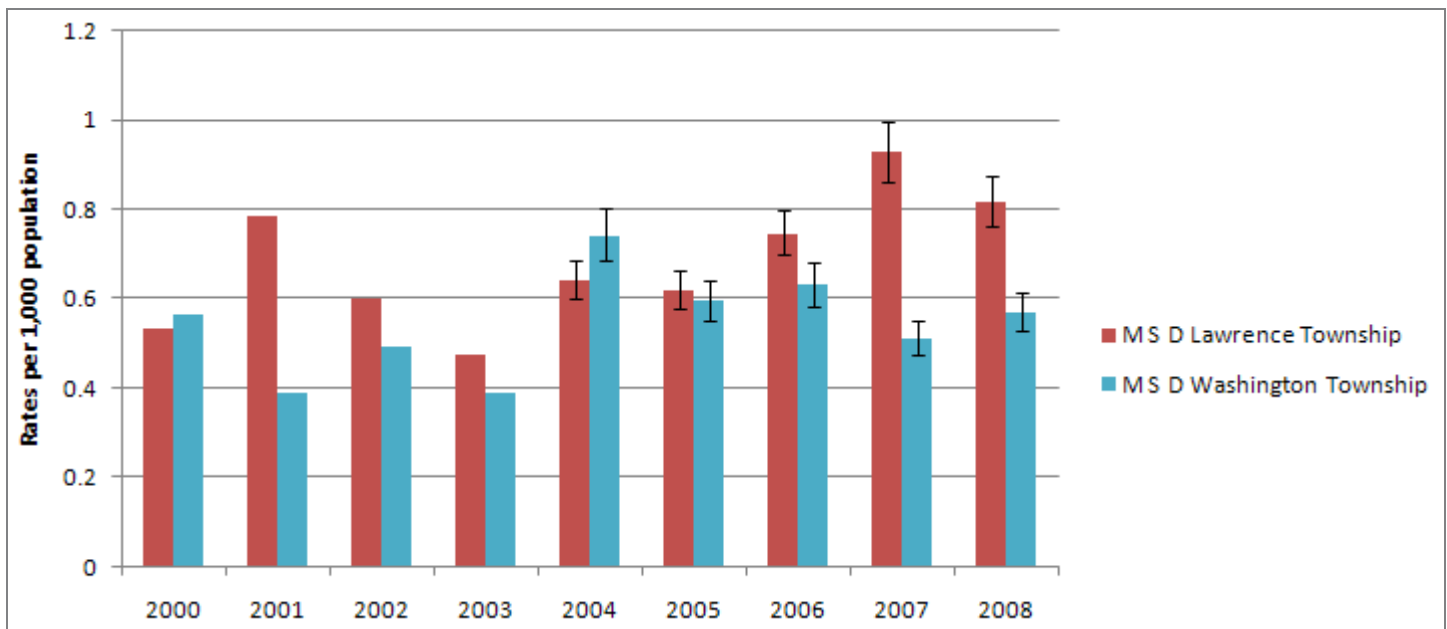
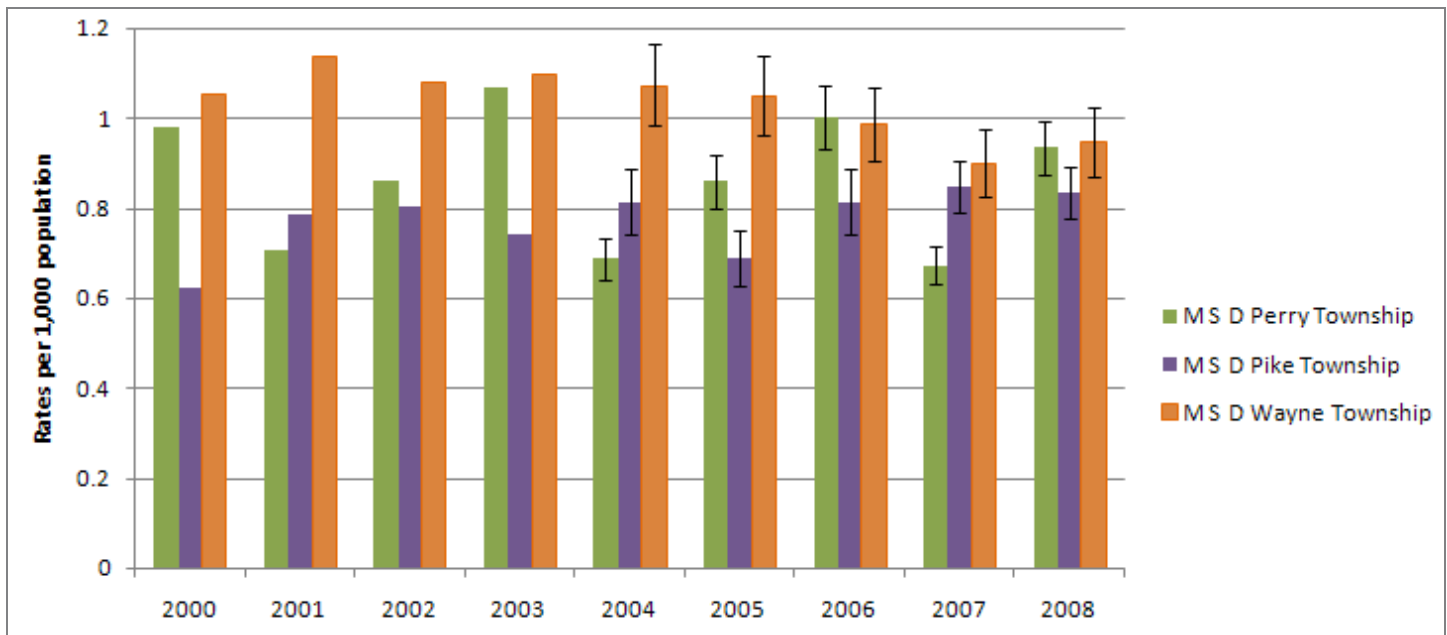
Source: Health and Hospital Corporation of Marion County, U.S. Census Bureau

The number of births to mothers age 15 to 18 is from the Health and Hospital Corporation of Marion County. These data are released to The Polis Center and the SAVI Community Information System by the address of the mother. The address is geocoded and aggregated to the school corporation. It is important to note that the mother may or may not go to school in the school corporation of her home address.

The SAVI Community Information System has approximately 215 indicators relating to birth and death statistics in Marion County. These data range from 1988 to 2008. For more information, visit [www.savi.org](http://www.savi.org).



## Births Where Mother is Age 15- 18 per 1,000 Population\* by School Corporation



## Appendix

### Births Where Mother is Age 15-18 per 1,000 Population

	2000	2001	2002	2003	2004	2005	2006	2007	2008
Indianapolis Public Schools	2.05	2.03	1.88	1.77	1.9 +/- 0.08	1.8 +/- 0.08	2 +/- 0.08	1.87 +/- 0.07	1.87 +/- 0.07
M S D Lawrence Township	0.53	0.79	0.60	0.48	0.64 +/- 0.04	0.62 +/- 0.04	0.75 +/- 0.05	0.93 +/- 0.07	0.82 +/- 0.06
M S D Perry Township	0.98	0.71	0.86	1.07	0.69 +/- 0.05	0.86 +/- 0.06	1 +/- 0.07	0.67 +/- 0.04	0.94 +/- 0.06
M S D Pike Township	0.62	0.79	0.80	0.74	0.81 +/- 0.07	0.69 +/- 0.06	0.81 +/- 0.07	0.85 +/- 0.06	0.83 +/- 0.06
M S D Washington Township	0.56	0.39	0.50	0.39	0.74 +/- 0.06	0.6 +/- 0.05	0.63 +/- 0.05	0.51 +/- 0.04	0.57 +/- 0.04
M S D Wayne Township	1.06	1.14	1.08	1.10	1.07 +/- 0.09	1.05 +/- 0.09	0.99 +/- 0.08	0.9 +/- 0.07	0.95 +/- 0.08

Source: Total Population data source varies by data year: 2000-2003: 2000 U.S. Census, 2004-2006: 2006 American Community Survey, 2007-2008: 2007 American Community Survey. Birth data source: Health and Hospital Corporation of Marion County.

### Number of Births to Mothers Age 15-18

	2000	2001	2002	2003	2004	2005	2006	2007	2008
Beech Grove City Schools	21	15	12	6	8	13	13	10	14
Franklin Township Com Sch Corp	13	13	28	17	19	20	26	27	26
Indianapolis Public Schools	675	668	618	581	535	526	574	538	483
M S D Decatur Township	28	20	22	27	27	34	24	28	21
M S D Lawrence Township	46	68	52	41	61	59	71	84	74
M S D Perry Township	76	55	67	83	63	79	92	64	89
M S D Pike Township	42	53	54	50	59	50	59	61	60
M S D Warren Township	43	59	66	61	71	56	68	84	74
M S D Washington Township	49	34	43	34	61	49	52	43	48
M S D Wayne Township	79	85	81	82	86	84	79	74	78
School Town of Speedway	7	12	8	6	11	7	9	12	4
Total	1,079	1,082	1,051	988	1,001	977	1,067	1,025	971

Source: Health and Hospital Corporation of Marion County

\* Total population for years 2000-2003 are from the 2000 Census. Total population for years 2004-2006 are from the 2006 ACS. Total population for years 2007-2008 are from the 2007 ACS. Margins of error are shown in the graph where needed.