



Issue 13—December 21, 2006

Welcome to SAVI Connections, the electronic newsletter regarding the SAVI system. SAVI Connections provides news about SAVI, demonstrates various ways in which SAVI can benefit your organization, announces release of new data, showcases new tools, highlights a variety of SAVI users, and broadcasts user support and training options. The Polis staff encourages your ideas and feedback. Please address comments to: savi@iupui.edu. View past newsletters at: <http://www.savi.org/savii/about/news.aspx>

What's New?

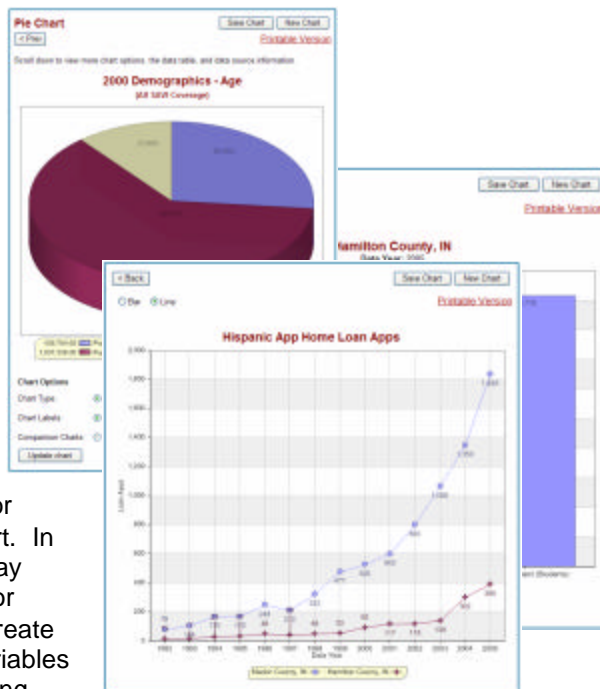
New Data

- Home Mortgage Disclosure Act Data for entire SAVI area including high-cost loan data (2004 and 2005)
- Uniform Crime Report Data for Marion County (Q1 and Q2 2006)
- Juvenile Justice Data for Marion County (2005)
- Several updated community assets:
 - Human Service Programs
 - Banks
 - Hospitals and Clinics
 - United Way Agencies
 - Places of Worship
- Updated geographies for Marion County:
 - IndyGo Bus Routes
 - Registered Neighborhoods

Charts & Graphs—A New Tool for SAVI Users

An exciting new tool arrives in December on SAVI. Charts & Graphs allow users to compare geographic areas, view changes over time, and view population distributions in a pie chart, bar chart, or line graph. They are also helpful to analyze trends and do comparisons. For example, you can create a chart showing a strong upward trend in Hispanic home purchase loans over a time period from 1992 to 2005 (see below). You also can look at trends specific to your own neighborhood.

Two types of charts are available: Pie Charts and Bar Charts. Pie Charts allow users to compare proportions of a variable to a total count. Initially, you will be able only to select predefined variables for a given geography for creating a Pie Chart. In the future, SAVI may provide a system for allowing users to create Pie Charts with variables of their own choosing.



With Bar Charts, users can compare a series of indicators in multiple geographic areas, view multiple indicators for a single neighborhood, or conduct trend analysis of multiple indicators. Any data in SAVI that is available for mapping may also be used for creating bar charts, allowing highly customizable displays. Once you have created the perfect chart, you can save it and/or print it for sharing with others.

What's New?

New Community Profiles

- View Community Profiles for three new geography types; 2000 Census Tracts and Blockgroups and School Corporations
http://www.savi.org/savii/comm_info/default.aspx

Website Update

- New Charts & Graphs Tool allows you to compare years, geographies and indicators.

SAVI Training Schedule

All classes are offered FREE of charge and will be held at [The Polis Center](#). Space is limited. Visit the training website to view a full description of each session and to register:

<http://www.savi.org/savii/support/training.aspx>. You may also register by calling 274-2455.

SAVI Charts & Graphs Workshop

- Using Charts & Graphs

Wednesday, January 10, 11:00 – 12:00pm
Thursday, February 15, 11:00 – 12:00pm

SAVI Basic Training: Level 1

- SAVI Overview
- Using SAVI Interactive to Explore Communities

Thursday, January 11, 9:00 – 12:00 p.m.
Wednesday, March 14, 1:00 – 4:00 p.m.

SAVI Basic Training: Level 2

- How to Ask Questions Using SAVI Interactive
- Using SAVI to Develop Reports and Grant Requests

Thursday, January 18, 9:00 – 12:00 p.m.
Wednesday, March 21, 1:00 – 4:00 p.m.

SAVI Advanced Training: Level 3

- Basic Analysis Techniques Using SAVI-Interactive

Wednesday, February 7, 9:00 – 12:00 p.m.
Wednesday, April 4, 9:00 – 12:00 p.m.

For more on this new tool, consult the SAVI training schedule in this issue and sign up for the Charts & Graphs Workshop or SAVI Basic Training Level 1.

Second Annual SAVI Users Conference

On Friday, September 29, over ninety individuals, representing thirty-seven organizations, gathered on the IUPUI campus for the Second Annual SAVI Users Conference. In response to evaluations of the inaugural conference, the 2006 version was more interactive, with sessions designed to allow users to explore new SAVI tools and to share their experiences on how best to use the rich array of data in the nation's largest community information system. Breakout sessions included topics such as how to use SAVI to understand community issues, how to integrate SAVI data with other data from the Internet and other sources, and new approaches to mapping public health data.

One-third of the participants agreed to evaluate the conference, which resulted in valuable information on how to make the day even more helpful to users. More time for networking was the most frequently offered suggestion. A number of attendees noted that providing a common lunch would be an ideal way to allow users to learn from each other informally. Another valuable suggestion was to provide users with more information about other local and state data resources, as well as guidance on how to use them effectively either with or without SAVI.

For more on the conference evaluation results, click [here](#).

New Geographies for Community Profiles

Community Profiles have been one of SAVI's most popular tools since they were first added to the website in February of 2005. This tool allows you to view many different indicators in several categories all specific to a geographic area, such as Marion County, for example.

Until now, Community Profiles were available for only counties, townships, and a handful of neighborhoods. This December marks the release of Community Profiles for school corporations and 2000 census tracts and blockgroups further expanding the capabilities of this useful tool. Look forward to the future release of Community Profiles for 1990 census tracts and blockgroups and additional neighborhoods.

Seasons Greetings



SAVI is a community information system administered and maintained by [The Polis Center](#), a unit in the [School of Liberal Arts](#) at IUPUI. SAVI is supported financially by the following organizations: [Nina Mason Pulliam Charitable Trust](#); [Richard M. Fairbanks Foundation, Inc.](#); [Health Foundation of Greater Indianapolis, Inc.](#); Indianapolis Foundation, an affiliate of [Central Indiana Community Foundation](#); [Annie E. Casey Foundation](#); [Lilly Endowment, Inc.](#); [United Way of Central Indiana](#); [City of Indianapolis, Department of Metropolitan Development](#); [Marion County Health and Hospital Corporation](#); [Indiana University-Purdue University at Indianapolis \(IUPUI\)](#).

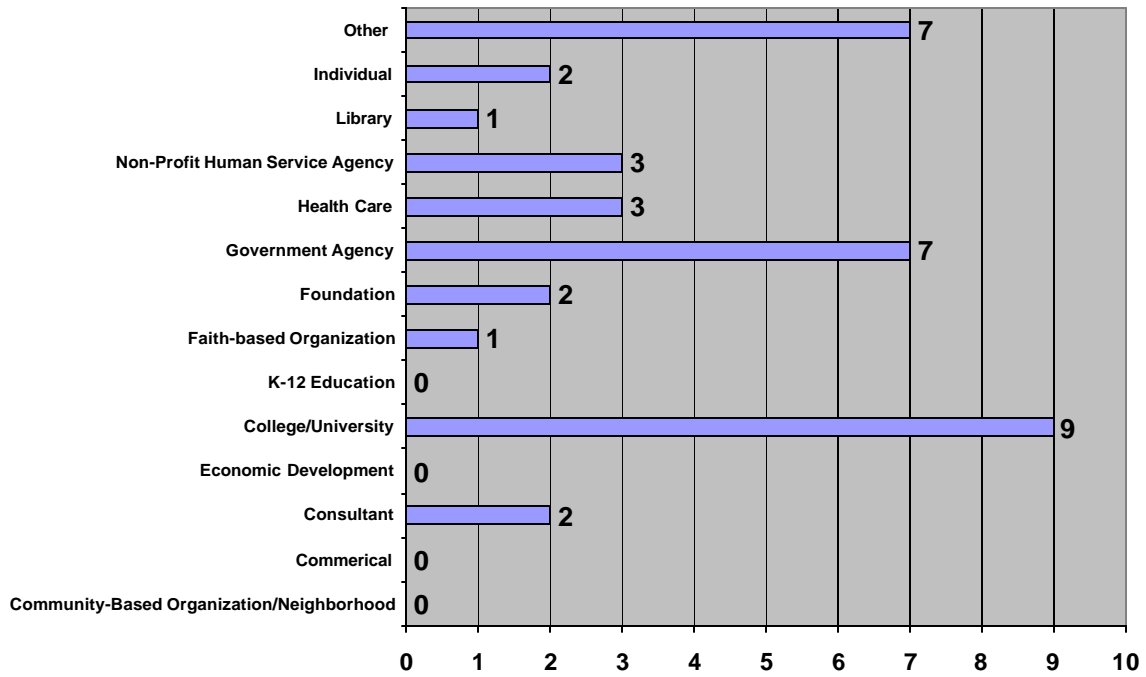
For more information about SAVI, please visit the website at www.savi.org.

To subscribe to SAVI Connections, send an e-mail to LISTSERV@LISTSERV.IUPUI.EDU with no subject and only the following in the body: SUBSCRIBE SAVI_NEWS-L

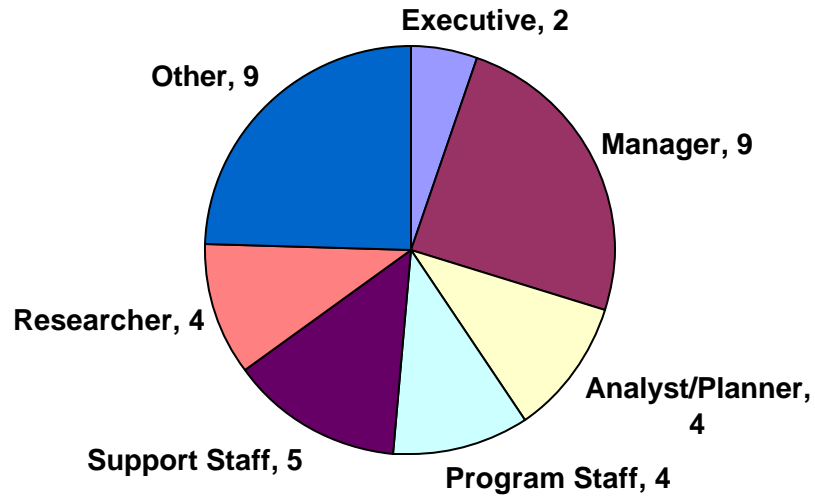
To unsubscribe to SAVI Connections, send an e-mail to LISTSERV@LISTSERV.IUPUI.EDU with no subject and only the following in the body: UNSUBSCRIBE SAVI_NEWS-L

Selected Results from SAVI User Conference Evaluations

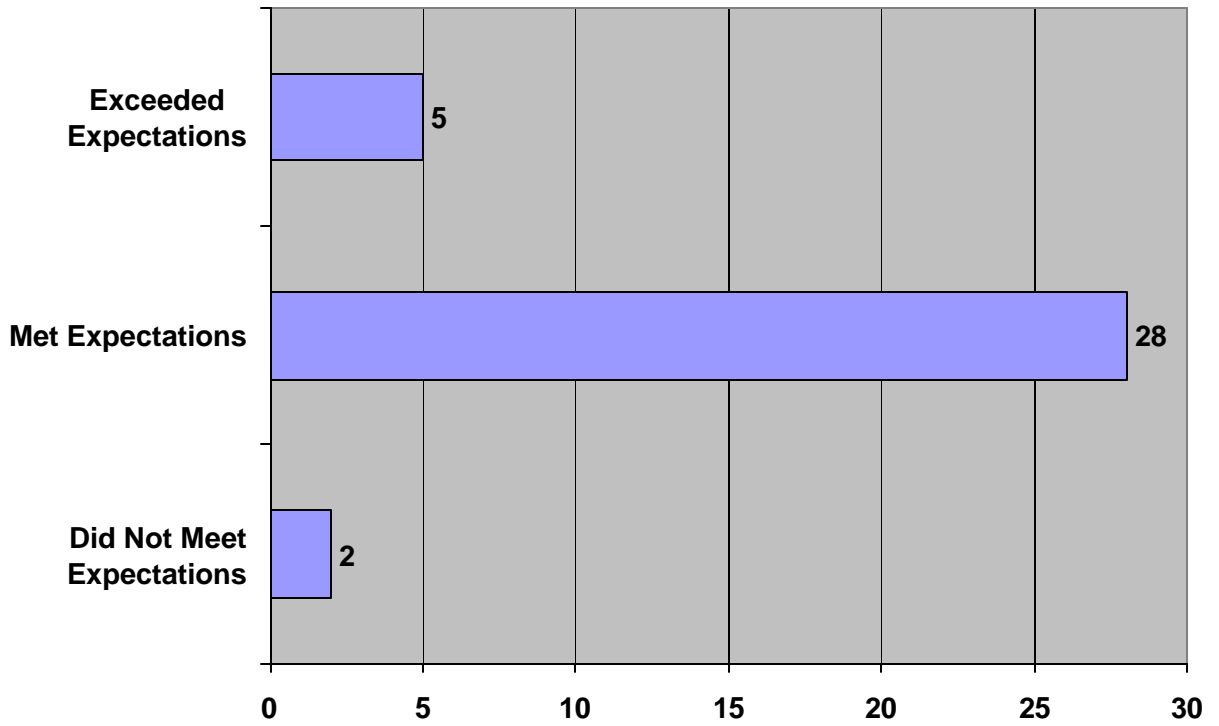
Organizations



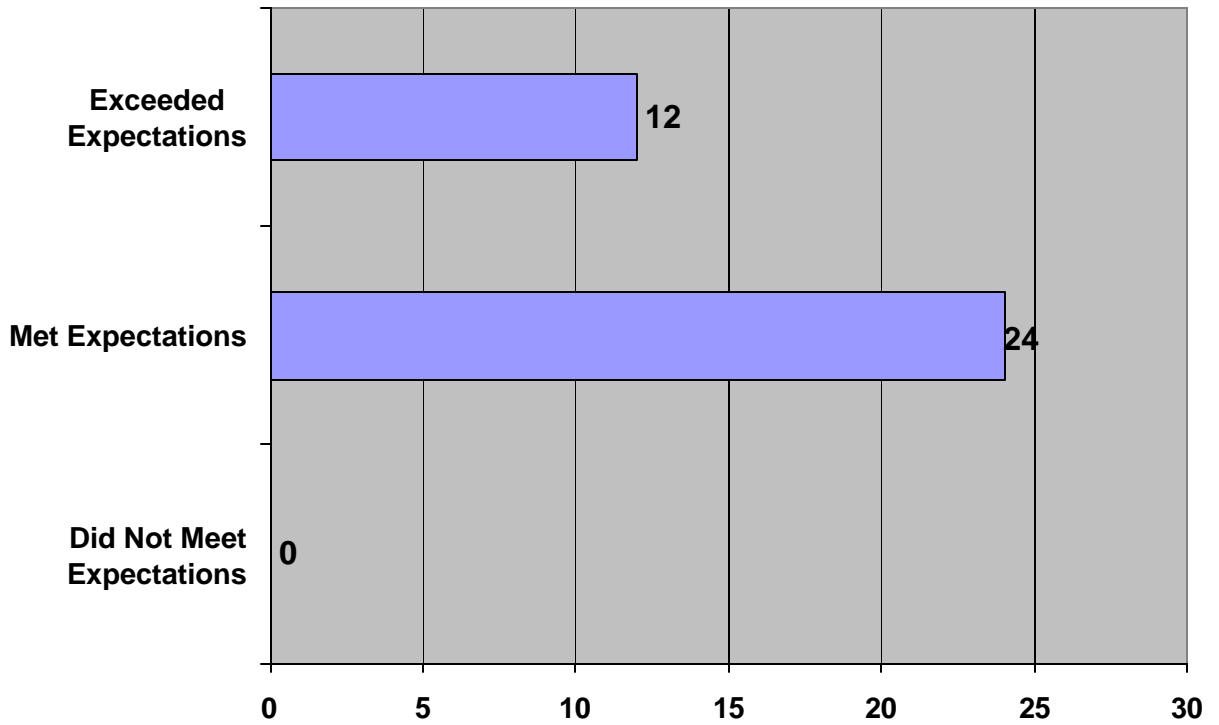
Which of the following best describes your position in the organization?



How would you rate the agenda?



How would you rate the conference overall?



**How likely are you to apply what you learned
at the conference to your work?**

