

# SAVI ONLINE Magazine

what's trending in your community

2015 EDUCATION EDITION

IN THIS ISSUE:

## SAVI AIDS UNITED WAY IN DATA INTEGRATION

CASE STUDY: PAGE 4

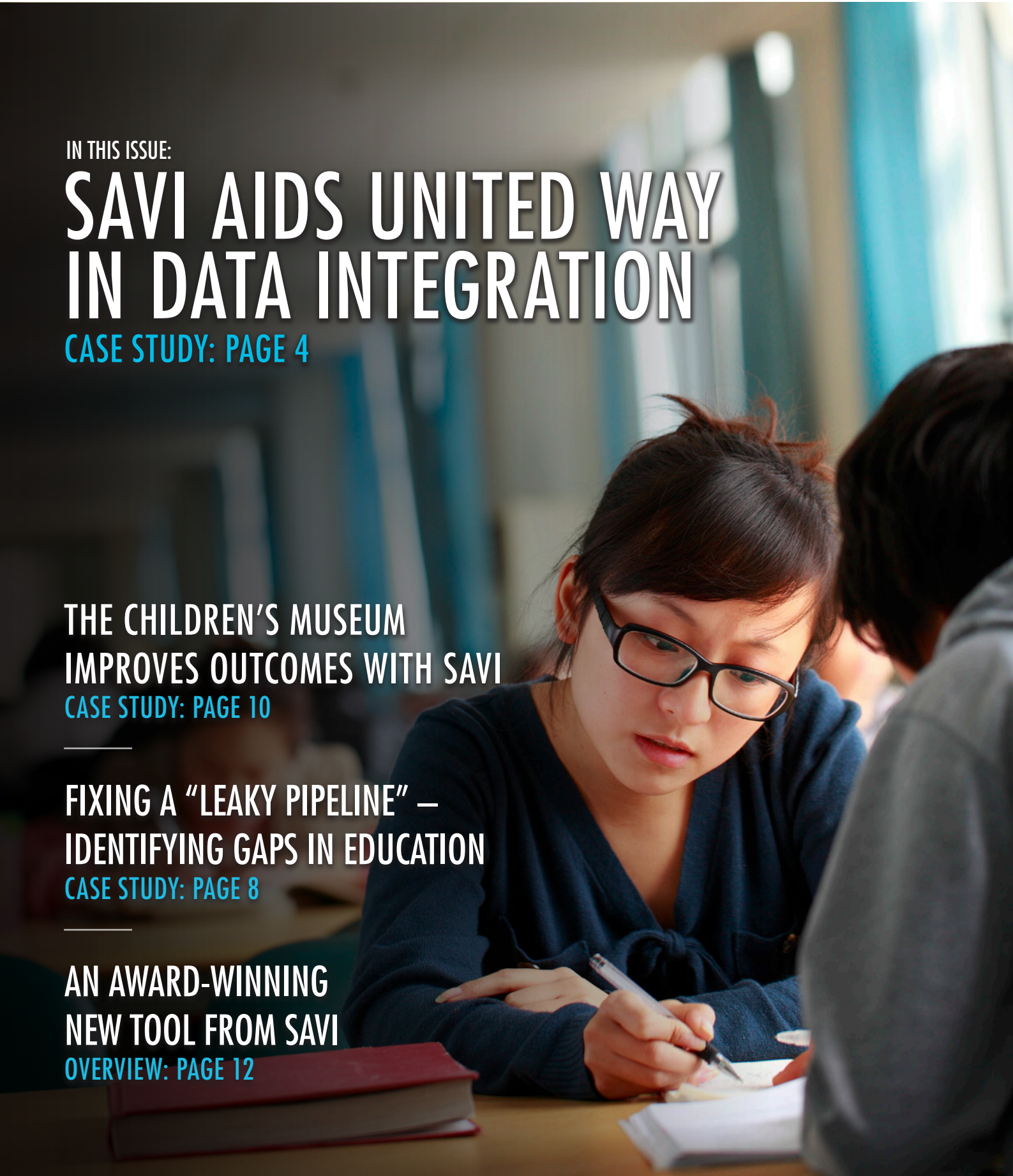
THE CHILDREN'S MUSEUM  
IMPROVES OUTCOMES WITH SAVI  
CASE STUDY: PAGE 10

---

FIXING A "LEAKY PIPELINE" —  
IDENTIFYING GAPS IN EDUCATION  
CASE STUDY: PAGE 8

---

AN AWARD-WINNING  
NEW TOOL FROM SAVI  
OVERVIEW: PAGE 12





## PROGRESS IN EDUCATION

Education affects every Indiana resident. It directly impacts health, crime, employment, income, and many other pressing social and economic issues. But education is a contentious and complex subject. How do we know where to direct our energies and resources? How do we know if we are making progress?

SAVI plays a critical role in helping schools, coalitions, and nonprofits improve education outcomes. It not only provides critical data, but it has the tools to allow partners for educational improvement evaluate their progress.

In a shift from an exclusive focus on K-12, many researchers now take a “cradle to career” view of education. We are much more aware now of how many factors affect a child’s chances of success before he or she reaches kindergarten. We also know how these factors continue to influence educational outcomes beyond high school.

With this shift comes a challenge: the data we need to plan and evaluate our

efforts is no longer contained in a single database.

SAVI helps to solve this problem in three ways. First, it integrates a wide variety of relevant datasets by linking them to multiple geographies from neighborhoods and school corporations to counties and the Indianapolis MSA. Second, it provides the tools to analyze and visualize the data and to present it in meaningful ways. And it works with partners to insure that data are used impartially and responsibly.

Providing reliable data in easy-to-comprehend ways is essential because interested audiences range from parents and reform advocates to researchers. SAVI helps educators, policy-makers, and citizens understand the full context of learning both in and out of the classroom through online report cards that track progress. It also works to discover gaps and to identify community assets that can help to make changes that improve lives.

In this issue, we bring you stories of

how community leaders—within United Way of Central Indiana, The Children’s Museum of Indianapolis, and Central Indiana Education Alliance—are using SAVI to analyze and change local education for the better.

SAVI enables educators and community leaders to target neighborhoods and offers a comprehensive view of assets and deficiencies in a geographic area. If education outcomes are poor in a certain

neighborhood, for example, SAVI enables a user to view detailed demographic information and map out assets such as schools, transportation, and health and human services to have a complete, visual view of what amenities may or may not be available to a family living in that area.

Through data analysis, visualization, and capacity building, SAVI helps to help answer some of the most complex educational questions in our community.

Chance that a Marion County resident 25+ with no high school diploma is living in poverty: 1 in 3 (36.2%)  
Chance that a Marion County resident 25+ with bachelor’s degree or higher is living in poverty: 1 in 17 (5.9%)

Unemployment rate for Marion County residents 25+ with no diploma: 17.3%  
Unemployment rate for Marion County residents 25+ with bachelor’s degree or higher: 3.8%

Median annual income for Marion County resident 25+ with no diploma: 17,850  
Median annual income for Marion County resident 25+ with bachelor’s degree: 42,227  
Median annual income for Marion County resident 25+ with graduate or professional degree: 60,146

2000 Marion County residents 25+ with bachelor’s degree or higher: 25.4%  
2013 Marion County residents 25+ with bachelor’s degree or higher: 27.5%

1999 Marion County median household income in 2013 dollars: \$56,279  
2013 Marion County median household income in 2013 dollars: \$41,435

*Source: American Community Survey, 2013 1-year average*



# UNITED WAY: ENGAGING COMMUNITY STAKEHOLDERS IN DATA

Most people in Central Indiana support quality education, but the definition of quality can be elusive. Working with SAVI, United Way of Central Indiana is defining quality education in the community and set benchmarks to monitor progress. It also is integrating SAVI into its data plan even more robustly than in the past.

“As we started surveying people about what the word ‘education’ means to them, as you might expect most people assumed K-12 education,” explained Demetrius Glover, Vice President of Strategic Information at United Way. “However, we also define early

childhood—birth to five—as education, especially through quality childcare.”

Through its own research paired with SAVI data, UWCI measures its education goals against three main objectives: to have 80 percent of childcare centers reach high quality (levels 3 or 4 by the Paths to QUALITY rating system); 90 percent of third graders to read at grade level; and 90 percent of high school students to graduate on time.

Of the 91 nonprofits United Way funds in greater Indianapolis, 40 are involved in education. In the case of education, corporations frequently want to know

how they can support quality childcare and education in their neighborhoods. Some companies want to work with specific schools or identify schools most in need of help. They also want to know what the childcare centers are like near their operations and in the places where their employees live. To help with these questions, United Way’s team uses SAVI.

“Corporations and foundations are more interested in being able to fund direct outcome as opposed to outputs. They’re asking more from the nonprofit sector than they have in the past. It’s not enough to simply raise dollars and give them to worthy causes,” said Glover.

## A Modern Approach to Data Integration

Prior to integrating SAVI into its operations, United Way of Central Indiana’s strategic information initiatives meant laboriously compiling data for lengthy paper assessments.

“By working with SAVI, we can actually do all of those things electronically—identify areas that have need, connect them with the information they’re calling about or services in the community, and then start to look at what services the human service network provides for that area. All of this is in a more dynamic format than what we had previously done in the past,” said Glover.

Glover’s department serves as a technical hub for day-to-day use of SAVI for the whole organization. However, the impact is far-reaching across its affiliates. Staff members estimate that the vast majority of their partner agencies use SAVI, resulting in

a uniformity and consistency of data usage across Central Indiana.

## Scalable Solutions for the Big Picture

As a leader in the state, United Way has developed a successful model for data integration. In its role with the Indiana Association of United Ways, it served on the advisory committee to guide the creation of a Community Impact Report Card powered by SAVI that all United Ways in the state can use. “The tool looks like a United Way product and has a basic dashboard of trending data from SAVI systems,” explained Glover. “So, the information in SAVI has now been turned into a user-friendly format that helps local United Ways across Indiana.”

“One of the key things we’ve really been working on with the Polis Center is to incorporate SAVI into our long term strategy,” said Glover. “Our big collaboration with SAVI going forward will be a data integration plan to connect the social economic data in SAVI with the 211 call-in service and nonprofit data.” This will help United Way be more strategic in how it invests donor dollars in the community.

With the targeted approach of its own strategic initiatives, powerful data and analysis from SAVI, and a large network of donors and stakeholders eager to improve education, United Way of Central Indiana is working to change the conversation around education in Central Indiana, and ultimately, change the outcomes. ♦



# COLLECTIVE IMPACT: USING DATA TO IMPROVE EDUCATION

**The Central Indiana Education Alliance, a coalition of more than 100 partners dedicated to improving education, convened its Early Childhood Coalition in July 2015 to consider the latest research resulting from its partnership with SAVI. The array of information was impressive: maps, an online data dashboard, and a preview of the coalition’s annual report.**

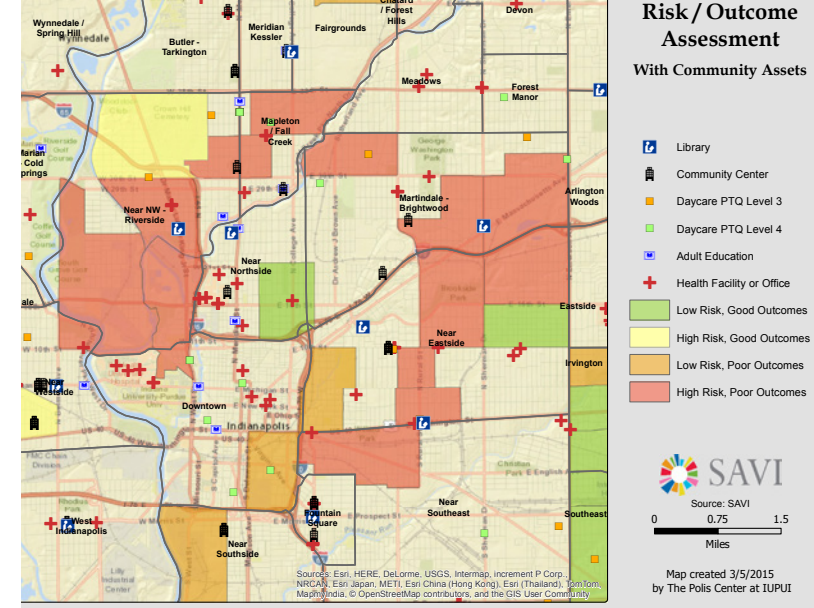
**W**HAT HAPPENED NEXT was not what you might expect. The review of the data raised new questions and the need for even more data to find clarity on issues of childhood school readiness. Policies based on anecdotal evidence gave way to the realization that the data did not always support the group’s assumptions. But rather than call for new studies, coalition members went online. They used SAVI during the meeting to answer their new questions and test new approaches. With the data at their fingertips, they experienced data in action.

“It’s been important to use the data because SAVI gives us the opportunity to look at geographic space, and space is really places imbued with particular meanings. We need the data to interpret those meetings,” Dr. Khaula Murtadha, alliance member and Associate Vice Chancellor for Lifelong Learning at IUPUI,

said at the meeting. “So, space, place, and data are really coming together in ways that can inform us about the decisions that we make. SAVI has been critical to that process. Using SAVI data has helped us be able to see, not only in certain communities where there are assets, but also where there are gaps.”

The experience of the Education Alliance demonstrates how data can be used to help disparate groups reach a common goal. Coalitions often face a unique challenge: each member has its own benchmarks and its own data. SAVI measures outcomes in a way that helps such groups think on a larger scale about the data they are collecting. With the Education Alliance, for instance, it became clear that family health and access to early education can have a ripple effect across the entire education spectrum.

Using SAVI to target outcomes in specific neighborhoods enabled the



Education Alliance not only to inform themselves but to educate their community partners. Beyond its members, the coalition uses SAVI maps and data to start conversations with current and potential partners about solutions to fill the gaps.

## Identifying Gaps in the Education Continuum

Over the past five years, the Education Alliance has taken a “cradle to career” view of education in the region, using SAVI data to measure education outcomes and analyze indicators that affect those outcomes. Its aim is not to think only in terms of grades and schools but in terms of the whole. The coalition is interested in collective impact.

The group also wants to leverage existing assets to fill the gaps it identifies. “We are really at the cusp of trying to figure out where we want to work and how we want to work in different communities in Central Indiana,” explained alliance member and Early Childhood Coalition co-chair Karen Ruprecht, a Research Associate at Purdue University. “Obviously, Central Indiana is a huge geographic area, and we wanted to focus some of our efforts really locally and look at some place-based strategies that were already in existence. So,

## Measuring Impact: Health Risk Factors and Educational Outcomes

The Education Alliance wanted to know how family health affects education, targeting low birthweight in particular. SAVI created maps showing targeted areas of Indianapolis that have high risk factors and poor birth outcomes and identified community assets with which they could potentially partner.

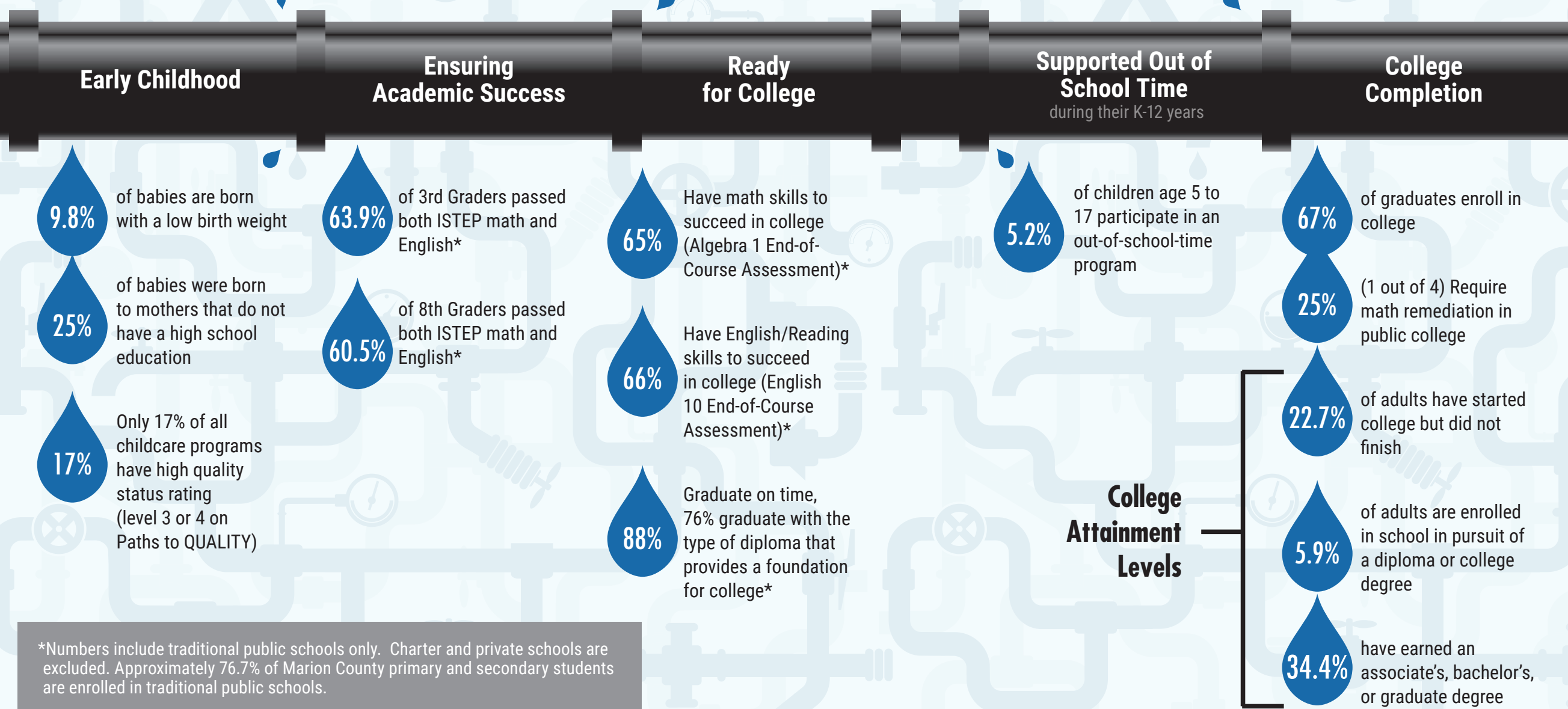
Early Childhood Coalition members were surprised to discover that in several neighborhoods with a particularly high rate of poor birth outcomes, virtually no community assets existed to support maternal health. “When we looked at some asset data in the three neighborhoods that we’re focused on, I was personally struck by the lack of assets that are physically located in the boundaries of these neighborhoods,” said Ruprecht. This knowledge helped them target that area in particular for intervention and outreach.

Local data. Local partners. Local solutions. The Education Alliance believes these ingredients will make educational reform a reality in Central Indiana.





# EDUCATION PIPELINE STATISTICS IN MARION COUNTY, INDIANA...



we use the SAVI data to hone in on the outcomes of greatest interest to us.”

In another example, the Education Alliance studied the high proportion of African-American men with no high school diploma who ended up incarcerated. By working backwards, the coalition was able to look for clues in the SAVI data for factors that could have influenced this target group’s poor outcomes.

Murtadha describes the education continuum as a “leaky pipeline”— a path with breaks along the way where some students go on to education and career success while others do not. “We really had to study and pay attention to that continuum,” she explained. “Not only paying attention to connecting the dots, but actually connecting them in a way that shows what’s going on, and why are some people not making it through this education continuum we’ve created.”

By looking at data for the entire continuum of education—from early childhood to post-secondary education—the Education Alliance is able to identify gaps that allow some students to fall through the cracks. Ruprecht said, “Our purpose is to improve the lives of families and children in these neighborhoods that we’ve targeted. We can’t do that very well if we have nothing to guide us, so the data is incredibly important to our mission and to our work.” ♦

## SAVI’s New Community On-line Report Card for Education

This Online Report Card allows you to explore interactive data visualizations to identify education successes, gaps, and disparities in Marion County.



OVERVIEW	SOCIO-ECONOMIC CONTEXT
EARLY CHILDHOOD	GRADES 3-8
INCREASED ACCESS TO COLLEGE AND IMPROVED COLLEGE GRADUATION RATES	CAREER/WORKFORCE DEVELOPMENT
GRADES 9-12	OUT-OF-SCHOOL TIME

[VIEW THE FINDINGS →](#)

# HOW DOES A MAJOR CULTURAL INSTITUTION WITH A NATIONAL FOCUS REACH ITS NEIGHBORS?

**That was the problem facing The Children’s Museum of Indianapolis. It never imagined that an answer might come from SAVI. But it did.**

The Children’s Museum is one of the top destinations of its type in the nation, with a powerful citywide and statewide reach. However, its level of success hasn’t stopped the museum from focusing on improving the lives of residents in its own backyard.



The Children’s Museum has a broad range of programs dedicated to community initiatives in the Mid-North neighborhood, and it uses SAVI to inform its program development in this area.

“SAVI is a great tool that I’ve used many times in a variety of roles in different places that I’ve worked, including as a board member of a nonprofit,” said Anthony Bridgeman, Director of Community Initiatives. “It’s a great tool useful for identifying or creating a better focus on the target populations or target areas that we’ll be working with.”

The Children’s Museum uses SAVI primarily for demographic research and analysis. For instance, it uses SAVI to identify nearby areas with a high concentration of families that it can target for neighborhood events and after-school programming. SAVI even allows the team to look for clusters of households with single moms or single dads. The team combines these demographics with key community assets, including transportation networks, to help them understand how best to serve this audience.

Some of the community initiatives offered by The Children’s Museum include after-school programming, free and

discounted museum admission for eligible families, and a Quality-of-Life plan to improve six Mid-North neighborhoods. Consider after-school programming: “In the northern part of the neighborhood, there are a lot of economic challenges, as well as crime, so we use SAVI to identify opportunities for working with community partners,” said Bridgeman. This strategy enhances educational opportunities for children in the neighborhood. Data mined from SAVI not only informs programming, but enables fundraising at The Children’s Museum by enriching case-making and reporting for grants.

“SAVI data is essential to really providing context to our funders, not only by showing them where the need is within the community, but also by demonstrating how we’ve made a difference over time,” said Cory Rutz, Director of Foundation and Government Relations.

Rutz first heard about SAVI from a colleague at the museum who had completed a SAVI training course. SAVI data, in conjunction with the museum’s own data, gives more context to grant reviewers and a richer reporting experience to donors who support programs at the museum. “The data and SAVI really help us tailor our programming at the museum when we are working with a particular school system or particular township,” said Rutz. “We can look more at what the needs are, what kind of education deficits exist, what kind of assets there are, and, sometimes, it can help us focus our efforts in one area or another.”

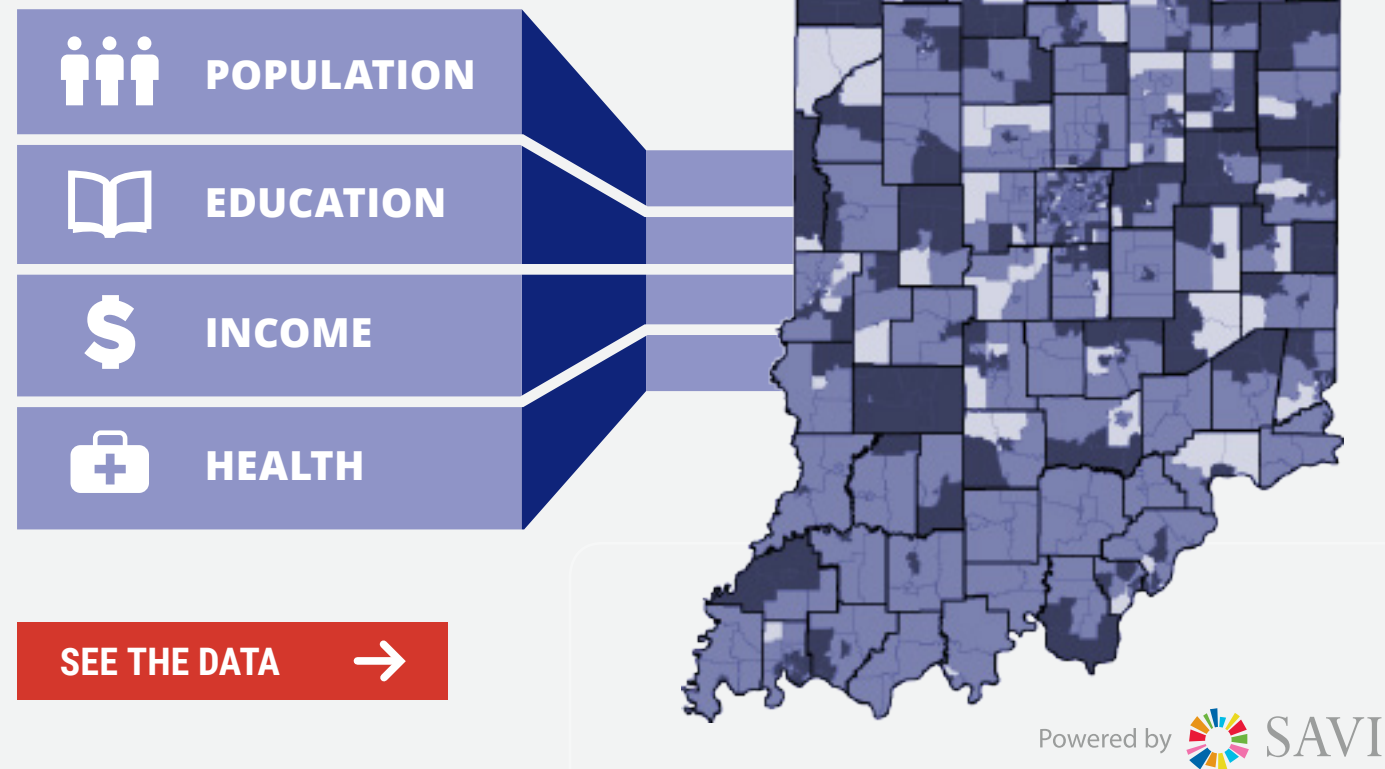
Whether at the regional level or in its immediate neighborhood, The Children’s Museum is using data to drive better education—and social—outcomes for families in Central Indiana. ♦







## INDIANAIMPACT.ORG COMMUNITY REPORT CARD



IndianImpact.org is the winner of the Indiana Geographic Information Council's Excellence in Geographic Information Systems Award.

The SAVI Team at the Polis Center at IUPUI created [IndianImpact.org](http://IndianImpact.org) to provide nonprofits quick access to a community dashboard for each county and United Way service area in Indiana. In one or two clicks, users can access a community dashboard that visualizes 35 community metrics using easy-to-interpret graphics. This award-winning tool also allows users to access time trends to see changes within a community over the past few years.

## HOW DOES USING SAVI AFFECT SOCIAL WORK CAREERS AND PRACTICE?

"Very useful and user-friendly tool to understand the assets and liabilities that a community has. It's great to search by both issue and community."

"I feel that it is very useful to quickly gain information and most importantly be able to compare neighborhoods that border each other and have hard quantitative data to utilize. I already see how using this in business and community plans would aid in making educated decisions."

"SAVI will let me know almost any information I want about a community, which will help me prepare before I enter a community."

WATCH THE VIDEO



# SAVI IN THE PRESS

**IUPUI Study: Overall crime down, violence up** RVT6 ▶

**Intersections** WFYI ▶

**In Indiana, Data Drives an Improved Approach to  
Healthcare Delivery** DATA INFORMED ▶

**GIS Mash-ups can help ACOs, HIEs** HEALTH DATA MANAGEMENT ▶

**Indy ZIP code's life expectancy lower  
than Iraq's. Why?** INDIANAPOLIS STAR ▶

**Life expectancy in Indianapolis  
metro areas varies widely** WFYI ▶

**Study finds big gaps in life expectancy  
depending on your zip code** FOX ▶

**Where you live in Central Indiana  
predicts your life expectancy** WTHR ▶

**Indiana Creates Nation's Largest Geospatial Tool  
to Improve Community Health** GOVERNMENT TECHNOLOGY ▶

**Is it time to start over in some crime-ridden  
Indianapolis neighborhoods?** INDIANAPOLIS STAR ▶

---

## DON'T MISS OUR NEXT ISSUE!

**SUBSCRIBE NOW** →



Contact SAVI  
317-278-9212 (Help Desk)  
[savi@iupui.edu](mailto:savi@iupui.edu)

1200 Waterway Blvd, Suite 100  
Indianapolis, IN 46202  
[savi.org](http://savi.org)

Stay Connected with SAVI

